

Color 800/1000 Presses

High definition image quality.
Fast. Vibrant. Flexible.



Digitally mastered for fine-tuned image quality

Color 800/1000 Presses deliver you sharp, rich, digitally mastered image quality. Utilising low melt, EA (Emulsion Aggregation) Dry Ink and new fusing technology, Color 800/1000 Presses bring you a wide colour gamut that can produce vibrant images with smooth sweeps that command—and hold—attention. Running all supported weights at rated speeds of 80 or 100 ppm, the Color 800 Press and Color 1000 Press deliver one of the widest ranges of media handling, from a light weight 55 gsm to a hefty 350 gsm.

Drive more jobs through your shop. Reduce costs. Our optional Automated Colour Quality Suite of tools for the Color 800/1000 Presses can help make it possible. These tools are designed to expand your printing capabilities and to enhance your efficiency and productivity. Our optional clear dry ink station, for example, enables you to apply spot or flood creative effects that bring your prints to life. And with flexible workflow, feeding and finishing, the Color 800/1000 Presses can enhance your environment now, and as your business volumes grow.



Image quality so outstanding, you won't want to look away

Our Fuji Xerox "low melt" EA (Emulsion Aggregation) Dry Ink technology uses no fuser oil, giving all your applications a smooth offset like finish. Chemically grown, its small, consistent particles produce great quality. The unique properties of EA Dry Ink are also environmentally friendly.

Advanced Fuji Xerox colour management technology—with closed loop process controls—enable vivid and consistent colour rendition.

Color 800/1000 Presses print at 2400 x 2400 dpi for excellent sharpness and uniformity. They deliver outstanding midtones, crisp text, pure neutrals, detailed shadows, bright highlights and excellent photo rendering, perfect for today's hot specialty photo applications. And Color 800/1000 Presses maintain benchmark colour consistency, from page to page and job to job.



Productivity and efficiency

We've listened to our customers and leveraged our experience and heritage in the production print industry to develop this newest member of our family. Expanding on our proven success, we've packed design and technology innovations into the Color 800/1000 Presses, making them the image quality and productivity powerhouses that fit your production schedules as well as your workspace. For instance:

- Advanced imaging technology with long life photo receptors and dual wire, auto-cleaning corotrons lasts longer and provides more uniform print quality.
- The seamless Intermediate Belt Transfer (IBT) provides even greater versatility, speed and reliability.
- Tight front-to-back registration within ± 0.5 mm with electronic controls and sensors that automatically adjust to sheet conditions.
- Highly proficient belt fuser technology efficiently transfers energy and supports wide media latitude to deliver smooth, crisp, clean output at production print speeds.



- Our single-pass decurler integrates both belt and roll technologies for optimal sheet flatness, while the advanced inline cooling module ensures outstanding stack quality.

Automated Colour Quality Suite (ACQS)

You can also opt for our Full Width Array technology, which delivers the Automated Colour Quality Suite (ACQS), a set of colour management tools unique to our portfolio of digital colour production presses. These productive tools automate time-consuming daily tasks so colour-critical jobs can be completed faster. Routine tasks such as colour calibration and profiling become simple and quick for your operators.

In addition to those colour management tools, the optional Full Width Array also delivers Image-to-Media Alignment, allowing an operator to automatically adjust for front-to-back registration, perpendicularity, skew and magnification. You can create and store custom paper and alignment profiles for paper stocks to ensure proper alignment.

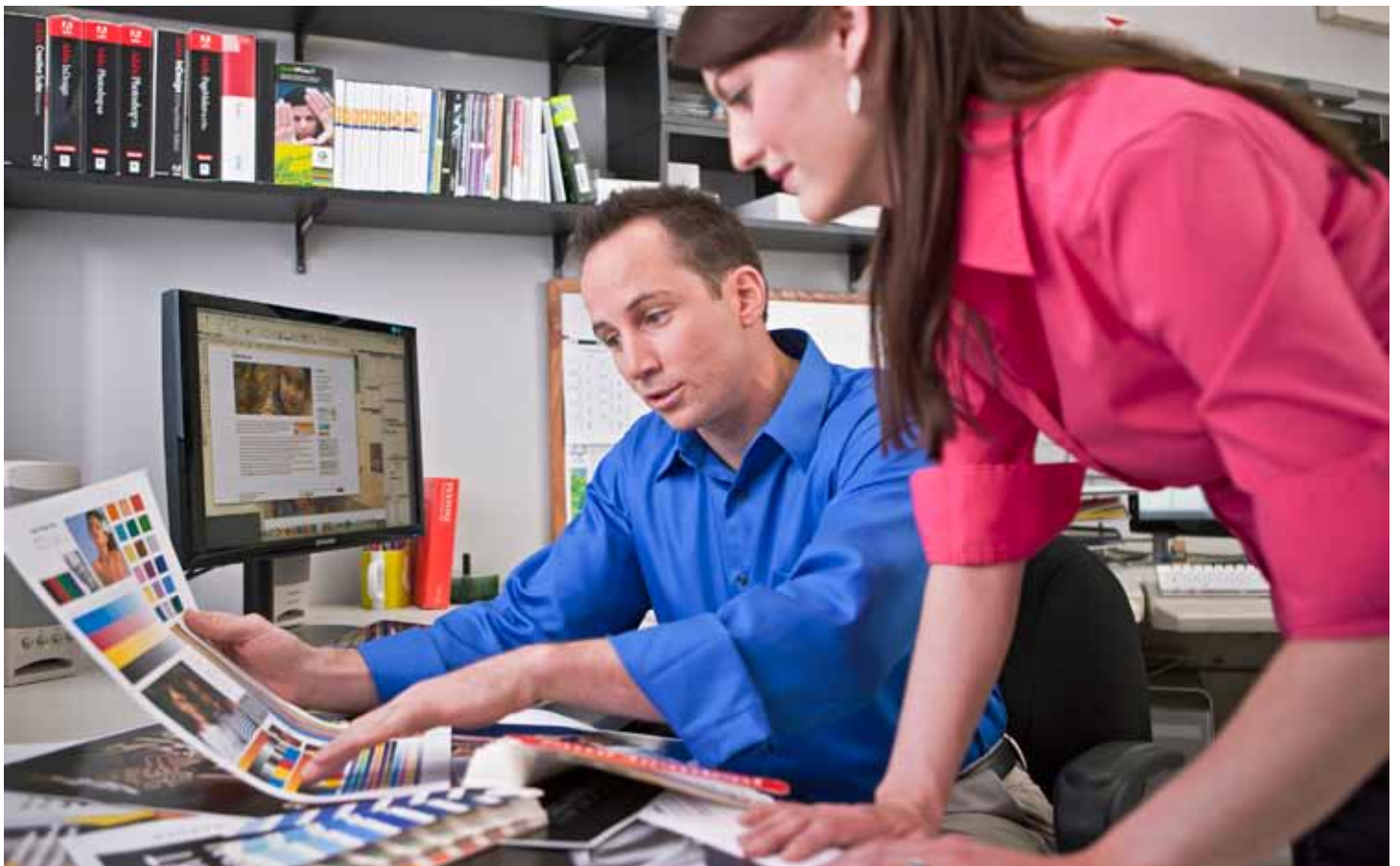
Delivering outstanding midtones, crisp text, pure neutrals, detailed shadows, bright highlights and excellent photo rendering, the Color 800/1000 Presses are perfect for today's hot specialty photo applications.

Boost your productivity and achieve accurate, consistent colour—fast

Color 800/1000 Presses offer you our Automated Colour Quality Suite (ACQS), a set of colour management tools, delivered by the optional Full Width Array technology, that can dramatically enhance your productivity.

With these efficient tools, your path to high-quality colour printing has never been shorter or more direct. Key tasks are automated to quickly deliver colour accuracy and repeatability from job to job, operator to operator.

The result? More hours to produce more jobs, more efficient operations, better return on your investment, minimise waste and the ability to regularly meet tight turnarounds—leaving your customers delighted.



Fewer steps for operators, more available press time

Your operators typically perform many routine tasks manually—daily, by shift, or by specific print job. While essential, these tasks require operator attention and can cut into your productive print time. And when tasks are performed manually, there's a greater opportunity for error and waste.

By automating regular activities like calibration and profiling with our Automated Colour Quality Suite, you can maximise both operator and print time, saving valuable minutes every time a task is performed. Your operators can initiate tasks easily, making a few simple selections right from your press's intuitive full colour Graphical User Interface.

Operators can automate these important tasks

Automated Calibration

Regular colour calibration is an essential step to ensure colour accuracy. It's a step that can cost your operators substantial amounts of print time. With Automated Colour Quality Suite, your operator can initiate calibration at your colour server. From there, the Full Width Array does quick work to ensure consistent colour from your press.

Advanced profiling*

Your operator will achieve accurate colour with advanced profiling capabilities. The advanced profiling feature automatically creates a superior, custom ICC-compliant destination profile for your applications. By mapping RGB and CMYK source images to a desired output standard—like a press or industry standard—you can produce more accurate colour.

Image-to-media Alignment

Your operators can quickly set up the best image-to-paper (front-to-back) registration for your media, save it to the paper profile and use it again and again. With optional Full Width Array, an operator initiates the automated image-to-media alignment. The press will run test prints and perform automatic adjustments for paper alignment inconsistencies such as registration (position), perpendicularity, skew and magnification. You won't require a service call, nor does your operator have to undertake a manual "print-measure-adjust-reprint" process.

More tools to build efficiency

The Full Width Array delivers additional automated procedures, previously reserved for service technicians. These include a procedure to automatically centreline your press, when necessary, at the start of a day or shift, as well as a feature to read and adjust inboard/outboard density. This allows the operator to finish a shift or a long job without having to call or wait for service.

* Advanced Profiling available on Fuji Xerox FreeFlow Print Server and CX Print Server, Powered by Creo Colour Server Technology

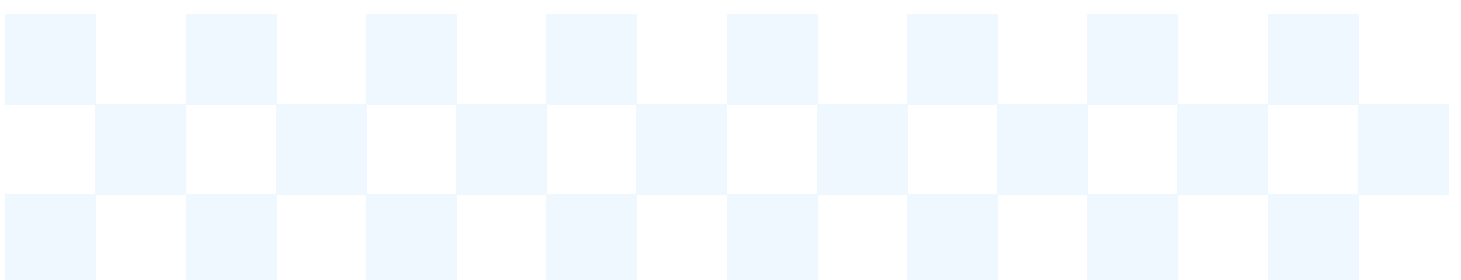
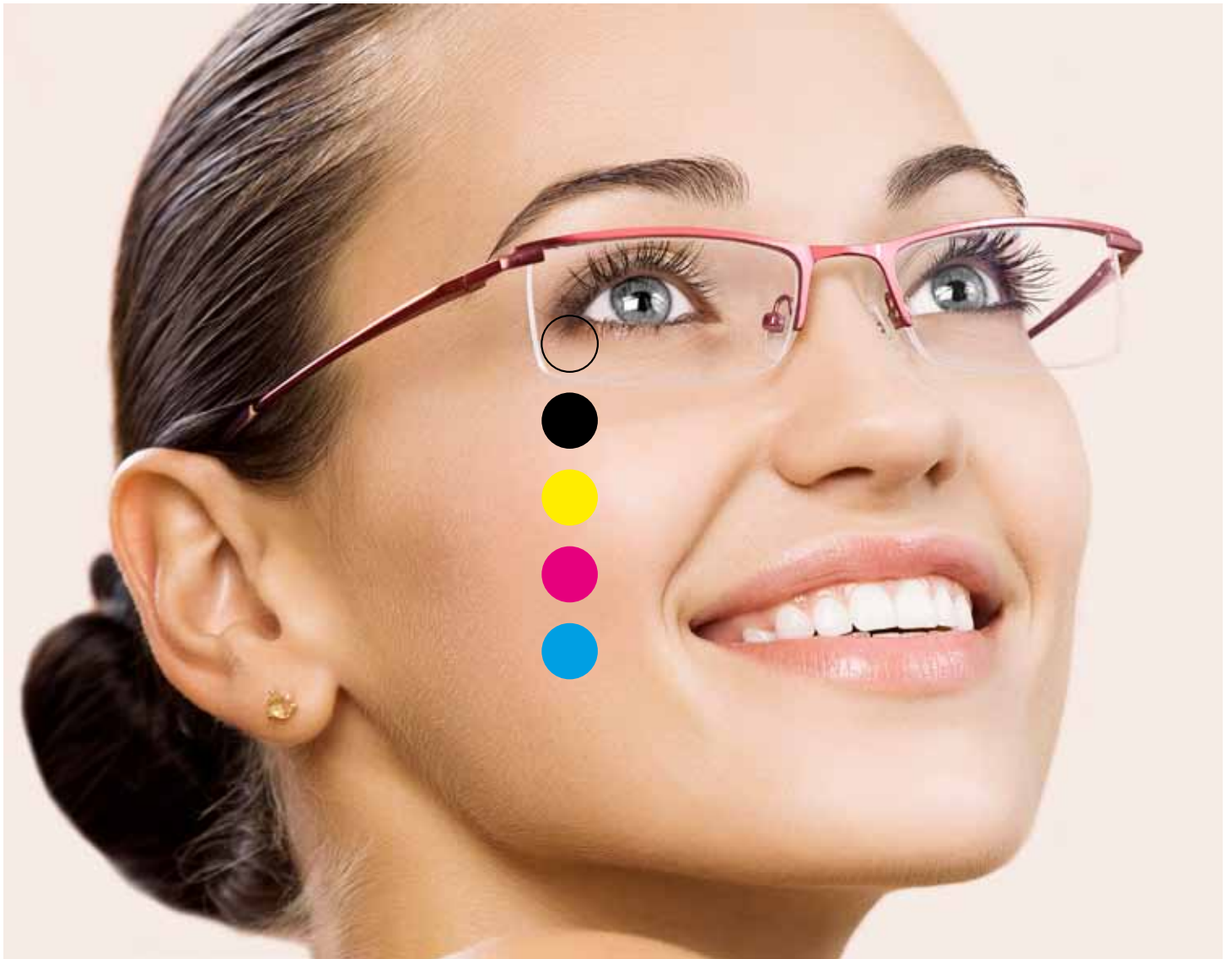


Full Width Array

- Array of RGB sensors that spans the entire width of paper path
- Scans post-fused images on media at rated speed
- Can centreline press and maintain accurate and consistent colour
- Automates image-to-media registration adjustments
- Utilises proven Fuji Xerox technology

Help your customers to be more creative—the value is digitally clear

Color 800/1000 Presses let you enhance the creativity and impact of your prints with an optional fifth print station that lets you apply a clear effect—expanding your capabilities to capture more high-value applications.



Clear

Clear dry ink also enables you to create a subtle, professional watermark effect or add an element of security. Or, you can flood the entire page with clear to draw attention and create contrast within an application. Go ahead and be creative. Using clear dry ink gives you the ability to add a new dimension to your printing business, helping your customers differentiate their printed pieces. With clear dry ink, you can highlight images for visual variety, making them stand out from the page—and add visual value and elegance to your customers' output.

The creative options you can offer by adding this new, clear dry ink capability can help you become a true partner to your customers. You can advise customers already expert in design and layout on how to set up their files properly for this additional clear layer to achieve their desired effect. Or you can offer creative value to customers when they deliver their files, by adding some of these effects right at your print server.

With clear dry ink, you can address specific areas on your printed piece or flood an entire sheet, enabling you to:

- Highlight images for visual variety to make them stand out from the page
- Draw attention to a headline or variable text
- Enhance photos, logos or variable images
- Simulate pearlescent or metallic appearance
- Apply digital watermarks to add artistic effects or enhance security
- Enhance print quality of textured stocks

Clear Dry Ink
Clear Dry Ink
Clear Dry Ink
Clear Dry Ink
Clear Dry Ink
Clear Dry Ink
Clear Dry Ink
Clear Dry Ink
Clear Dry Ink
Clear Dry Ink



Precision engineering built for your applications—look inside



1

Optional High Capacity Feeder C2-DS (Optional)

Additional two 2,000 sheet tray module can be added to extend paper capacities for a total of 8,000 sheets and four pick points that accommodate different stocks. Auto-Tray Switching and reload while run capabilities optimise press time.

2

Standard Trays

Unique integrated design promotes a smaller overall footprint. Two 2,000 sheet trays enable you to run lightweight and heavy-weight stocks from 55 to 350 gsm with sizes ranging from 182 x 182 mm up to 330 x 488 mm.

3

Paper Alignment

Ensures precise, ± 0.5 mm front-to-back registration with electronic controls and sensors that automatically adjust for paper size.

4

High Resolution Imaging

(Drum Developer Housing) State-of-the-art VCSEL technology provides outstanding 2400 x 2400 dpi resolution and digital halftone screens.

5

Auto Cleaning Wire Corotrons/Long Life Photo Receptors

Dual-wire/grid design provides more uniform charge to the photo receptor to deliver more stable print quality within page and page to page. Self-cleaning technology optimises press availability while maintaining high print quality standards.

6

Dry Ink Stations

Allow for load while run capability. EA (Emulsion Aggregation) Dry Ink produces high quality using less dry ink and no fuser oil, supporting a clean print processing environment.

7

Clear Dry Ink Station (Optional)

Lets you expand the creativity and impact of your documents to capture more high-value applications at full rated speeds of 80 or 100 pages per minute.

Integrated design—with features such as Standard Paper Trays engineered to be conveniently located within the print engine—reduces overall footprint (in base configuration) while paper path technology enhancements improve productivity.



8

Seamless Intermediate Belt Transfer
Provides great versatility, speed and reliability across a wide range of media and applications.

9

Fuser Belt Module
New silicon coated Teflon belt technology rapidly transfers energy more efficiently to fuse a dynamic range of stocks at higher (rated) speed up to 350 gsm.

10

Inline Cooling Module
Cools prints for optimum finishing and stacking.

11

Single Pass Decurler
Optimal sheet flatness using belt and roll technology.

12

Full Width Array (Optional)
Inline scanner bar with array of RGB sensors maintains consistent image quality, ensures quick, accurate colour reproduction and helps boost your productivity by automating key tasks for your operators.

13

Interface Module (Optional)
This component provides a gateway to support a wide variety of finishing alternatives.

14

High Capacity Stacker (Optional)
Provides production stacking capabilities (available in single and dual combinations) by supporting all supported media regardless of size and weight. Removable cart adds unload while run capability maximizing press time.

15

Output Tray
Provides quick and easy access for short runs and proofs.

Keeping your business moving

Productivity is the name of the game in all areas of your business today.

Customers demand you give them fast delivery of their jobs—with consistent, great image quality—and the flexibility to quickly turn around unexpected work. We've designed the Color 800/1000 Presses from the ground up to give you the capability to meet these demands on schedule. Intrinsic in our design is the ability for you to easily, quickly carry out routine maintenance tasks, letting you optimise available press time and put image quality under your control, 24 hours a day, seven days a week.



There are a variety of regularly scheduled procedures that we have simplified for you or your operators to perform at the time that is right for your business, without interrupting your workflow. Diagnostics software will alert you when a scheduled routine is approaching—it provides you status information and guides you step-by-step through the replacement procedures.

Dry ink cartridges, belts and corotrons have all been designed for optimum life, but when it's time for a change, we now put you in control. Parts snap in quickly and fit precisely, keeping replacement times to a matter of minutes. It's our way of helping you increase uptime, maximise productivity and optimise the performance of your Color 800/1000 Presses

The choice is yours. The results are outstanding

Different environments require different workflows. So, to accommodate your specific needs we offer a choice of three unique, high performance colour servers that help you generate graphic arts colour quality. They all have advanced colour management features and support variable data printing, as well as Adobe PDF Print Engine that allows you to accurately reproduce complex design elements and advanced graphic effects.

Fuji Xerox FreeFlow Print Server

This extremely fast, powerful and easy-to-use colour server with ConfidentColor Technology provides enhanced colour management and on-demand digital production capabilities. Built-in features such as Page Parallel RIP for optimised processing of variable information, page-exception programming, job forwarding and customisable print queues make job management easier.



CX Print Server, Powered by Creo Colour Server Technology

The robust CX Print Server combines colour management tools that yield superb colour output with an architecture specifically designed to maximise variable data productivity. And its platform integrates seamlessly with commercial print and high-end workflow environments.



EX Print Server, Powered by Fierey

EX Print Servers can be used to increase production and profits and deliver outstanding finished jobs simply and quickly. The innovative high-speed servers automate workflows and produce great colour and image quality that are consistent and accurate every time.



Colour Managed Workflow Solution, Powered by ORIS

A software and hardware package that enables colour matching across multiple print output devices—across a single or multiple sites. Allows you to produce print to international standards such as AS/ISO 12647, SWOP, GRACoL and FOGRA..

Choose the perfect finish for your applications

You can build the finishing combination that best services your needs, whether you deliver a wide range of jobs or focus on a vital few... we have the variety of finishing alternatives to meet your needs. Offering a range of choices for all production environments, Color 800/1000 Presses have the most complete, flexible, cost-effective finishing options in their class. It's so easy to add a professional finish to complement the outstanding image quality, clear dry ink design creativity and unique substrates made possible by the Color 800/1000 Presses. The best part: with its modular design, you can keep adding on as your business grows.



1
Optional High Capacity Feeder C2-DS

2
Color Press Print Engine (optional Clear Dry Ink station available)

3
Standard Paper Trays

4
PC Graphical User Interface

5
Optional Interface Module (Finishing)

6
Optional Dual High Capacity Stackers

7
Optional D4 Folder Unit: C-fold, Z-fold, Engineering Z-fold

8
Optional 200 Sheet Standard Post Press Inserter

9
Optional Finisher D4 with Booklet Maker

10
Optional SquareFold Trimmer Module

Configurations to meet your specific production needs

Color 800/1000 Press with High Capacity Stacker

Delivers maximum print productivity—delivering high quality, flat output sheets so you can quickly and efficiently leverage offline finishing.



Color 800/1000 Press with High Capacity Feeder C2-DS, Finisher D4 with Booklet Maker (with D4 Folder Unit) and SquareFold Trimmer

Flexible system to handle more “finished-on-demand” applications like booklets, tri-folds, bi-folds and more. The high capacity feeder enables more unattended volume and/or more media types in your documents.



Color 800/1000 Press with High Capacity Feeder C2-DS, High Capacity Stacker and Perfect Binder

Productivity and professionally finished perfect-bound books and manuals. With our offline mode for the perfect binder, more people in your print shop can generate perfect-bound books while your press operator can print efficiently to the high capacity stacker.



Color 800/1000 Press with High Capacity Feeder C2-DS, Finisher D4 with Booklet Maker and Plockmatic Pro 30 Booklet Maker

Your output can meet a vast array of application requirements, including flat sheet sets, a variety of stapled sets, an economical lay-flat binding and saddle-stitched booklets with full bleed trim capabilities.



Finishing options

From high capacity stacking, hole punching and folding to perfect-bound books, square fold booklets and lay-flats, our array of finishing options add polish to all your applications.

Finishing Options



Interface Module
(required to support finishing modules)



High Capacity Stacker (Single or Dual)
up to 5,000 Sheet Removable Cart (Top Tray 500 Sheets)

Your choice for long production runs, removable carts make it easy to unload your large jobs. Dual stackers support unload-while-run capability so you can be even more productive. Two carts are supplied with each stacker so you can be printing whilst the other cart is in your bindery.



Finisher D4 with Optional D4 Folder Unit

Enhance your standard finishing applications with convenience and flexibility. Variable length stapling for up to 100 sheets delivers neat output, regardless of your document size. Hole-punching saves time and money, while the optional folder enables you to create applications featuring bi-fold, C-, Z- and Engineering Z-folding.



Finisher D4 with Booklet Maker, with Optional D4 Folder Unit (up to 25 sheets or 100-page booklet)

Incorporating all of the features of the Finisher D4, plus booklet-making capabilities. Ideal for large booklets and calendars, up to 25 sheets with 100 imposed pages. Excellent handling of approved coated stocks along with saddle-stitch and bi-fold capabilities.



SquareFold Trimmer
(attaches to the optional Finisher D4 with Booklet Maker)

Enhance your professional finishing even further with creased cover sheets, face trimming and control of trim and square fold thickness. Create crisp, sharp square spine booklets that can be opened flat and are easy to handle, stack and store.



Perfect Binder

Say “yes” to more applications—novelty books, manuals, textbooks, course books, magazines, catalogues, trade books and selected photo books and yearbooks. Use inline or offline, you’ll have big capabilities in a small footprint. You can use mixed media to create these higher-value books, inserting pre-printed covers or covers printed in your workflow.

Additional Finishing Options



Finisher D5 for Finishing Transport

Includes Finisher D4 with Booklet Maker features with Optional D4 Folder Unit plus DFA (Document Finishing Architecture) required to support additional finishing options.



PlockMatic Pro 30 Booklet Maker (several options available including SquareFold, Cover Feeder, Face Trimmer, and Rotate, Crease and Bleed Trim module)

Produce larger professional-quality booklets—up to 30 sheets with full bleed—while running at full rated speed for top productivity. Add optional SquareFold module to further enhance finish. Great for offline use as well.

Feeding Option



High Capacity Feeder C2-DS

Provides an additional two 2,000 sheet tray modules that you can add to extend your paper capacities for a total of up to 8,000 sheets and four pick points to accommodate various stocks. Includes convenient insertion tray that allows you to handle smaller sheets (102 x 152 mm or 4" x 6")—ideal for specialty card applications. Auto-Tray Switching and reload-while-run capabilities help optimise your productivity.



GBC eBinder 200

Produce full 360°, “lay flat” booklets easily and quickly. You’ll have stack, punch and bind functionality, all in one inline device. Bind books of two to 100 sheets. Durable, self-adjusting polyester bind elements let you create professional flip presentations and calendars as well.

Color 800/1000 Presses Specifications

Image Resolution

| | |
|------------------|--|
| Resolution | 2400 x 2400 dpi VCSEL ROS. |
| Halftone Screens | 150, 200, 300, 600 Clustered Dot; 200 Rotated Line Screen; Stochastic. |

Technology

| |
|---|
| Xerox EA Low Melt Dry Ink: CMYK plus optional Clear Dry Ink Imaging (rated speed). |
| Customisable Electronic Aligner Adjustments (profiles). |
| Custom Paper Setup. |
| Dual wire corotrons with auto cleaning technology. |
| Advanced Belt Fuser technology. |
| Advanced inline cooling module. |
| Advanced Single Pass Decurler (belt and roll technology/optimal sheet flatness). |
| Seamless IBT (Intermediate Belt Transfer) with retractable Bias Transfer Rollers. |
| Long life photo receptors. |
| Modular feeding and finishing. |
| Advanced centre registration technology for tight front-to-back registration of ± 0.5 mm. |

Productivity

| | |
|------------------|--|
| A4 Print Speed | Color 800 Press: Up to 4,800 4/0 or 5/0 sheets per hour (80 A4 impressions per minute), all supported stock weights. Color 1000 Press: Up to 6,000 4/0 or 5/0 sheets per hour (100 A4 impressions per minute), all supported stock weight. |
| SRA3 Print Speed | Color 800 Press: Up to 1,200 4/4 or 5/5 sheets per hour (40 SRA3 impressions per minute), all supported stock weights. Color 1000 Press: Up to 1,500 4/4 or 5/5 sheets per hour (50 SRA3 impressions per minute), all supported stock weight. |

Paper and Image Format

| | |
|--------------------|---|
| Maximum Sheet Size | 330 x 488 mm |
| Minimum Sheet Size | 182 x 182 mm (optional tray inserter kit supports 102 x 152 mm) |
| Maximum Print Area | 326 x 484 mm (maximum image assurance of 317 x 484 mm) |

Paper Flexibility and Weights

| | |
|---------------------|--|
| Paper Types | Coated and uncoated papers, bright papers, DocuCard, labels, window decals, durable/synthetic papers, greeting cards, tabs, embossed, polyesters and custom solutions. |
| Stock Weights | 55 to 350 gsm (all trays, coated or uncoated stocks). |
| Auto-Perfecting | All supported stock weights at full rated speed. |
| Auto-Tray Switching | Supported along with reload-while-run capability. |
| Mixed-Stock Jobs | Supported. |

Input Capacity

| | |
|----------------------|---|
| Standard Paper Trays | Two trays up to 2,000 sheets each (based on 90 gsm stock). |
| Optional Paper Trays | Oversized High Capacity Feeder (OHCS) with two trays up to 2,000 sheets each (based on 90 gsm stock). |
| Stock Size/Weights | Any supported stock in any tray (optional tray inserter kit support for 102 x 152 mm only available in OHCS). |
| Maximum Capacity | Up to 8,000 sheets (four trays) with optional OHCS. |

Options

| | |
|----------|--|
| Feeding | Oversized High Capacity Feeder (OHCS) with two trays up to 2,000 sheets each (based on 90 gsm stock). |
| Stacking | Catch Tray: Up to 500 sheet capacity. High Capacity Stacker (HCS): 500 sheet top tray and 5,000 sheet offset stacking (on stacker cart). Available in single or dual combinations with unload-while-run capability. Includes two stacker carts for offline finishing. Additional carts available. |

Whilst the information is correct at the time of printing, Fuji Xerox Australia Pty Ltd reserves the right to change the specifications or withdraw supply of the equipment/software described herein without notice. Quality Endorsed Company ISO 9001:2000. QEC1950/01 SAI Global, Certified Environmental Management ISO 14001:2004. C10094 SAI Global. Other trademarks are the property of their respective owners.

Finishing

Finisher D4: Stacker capacity of up to 3,000 sheets (80 gsm stock); top tray 500 sheets. Multi-position single or dual 100 sheet variable length stapling. 2 and 4-hole punch (3-hole punch available as an option). 200 sheet interposer.

Finisher D4 with Booklet Maker: Includes features of Finisher D4 with stacker capacity of up to 2,000 sheets (80 gsm stock). Create saddle stitch booklets of up to 25 A4, A3 or SRA3 sheets (100 pages).

SquareFold Trimmer Module: Square fold up to 25 sheets (100 pages). Face trim between 2–20 mm in 0.1 mm increments. Available with Finisher D4 with Booklet Maker only.

Perfect Binder: 20 to 400 page books (80 gsm paper). Covers: 90 to 300 gsm coated and uncoated. Body pages: 64 to 105 gsm (uncoated) or 90 to 105 gsm (coated). Manual feed capability.

Folding/Punching

D4 Folder Unit: C-fold and Z-fold A4 (print on inside or outside of folded paper). Folds A3 Z-fold for insertion into A4 document sets (engineering Z-fold). Available with Finisher D4, Finisher D4 with Booklet Maker, and Finisher D5 for Finishing Transport.

DFA Finishing

Finisher D5 for Finishing Transport: Stacker capacity of up to 2,000 sheets (80 gsm stock). Integrated DFA architecture required to enable a variety of third party inline finishing options including those listed below.

Plockmatic Pro 30 Booklet Maker: Saddle stitch and fold from 2 sheets to 30 sheets producing up to a 120 page (80 gsm) booklet or simply fold a single sheet. SquareFold, Trimmer, Cover Feeder, and Rotate, Crease and Bleed Trim modules available. Requires Finisher D5 for Finishing Transport.

GBC eBinder 200: Stack, punch and bind lay flat A4 booklets from 5 to 100 sheets. Pass through capability permits chaining with other finishing alternatives. Requires Finisher D5 for Finishing Transport.

Dimensions

| | |
|--------|--|
| Size | 2,995 mm (W) x 1,107 mm (D) x 1,864 mm (H) Base printing system (without controller and/or feeding/finishing devices) |
| Weight | 1,390 kg (base printing system without PC UI) |

Monthly Duty Cycle

| | |
|------------------|-----------------------|
| Color 800 Press | 1.5 million A4 pages |
| Color 1000 Press | 1.75 million A4 pages |

Choice of Print Servers

| | |
|------------------|---|
| FreeFlow | Fuji Xerox FreeFlow Print Server |
| Fiery | EX Print Server, Powered by Fiery |
| Creo | CX Print Server, Powered by Creo Print Server |
| Automated Colour | Colour Managed Workflow Solution, Powered by ORIS |

Customer Expectation Document (CED)

For detailed product specifications, optimum performance parameters and service clearances refer to the Customer Expectation Document.



Protecting the environment is fundamental to our commitment to corporate citizenship. Fuji Xerox Australia provides products that have been designed with both our customers and the environment in mind. We are known for our end-of-life product resource recovery and remanufacturing programs. Our products regularly lead the industry in energy performance and all our sites maintain ISO 14001:2004 Environmental Management System Certification. Fuji Xerox Australia has been recognised for its achievements in environmental sustainability by the United Nations and the Banksia Environmental Foundation in Australia.

For more information or detailed product specifications, please call or visit us at

Fuji Xerox Australia Pty Ltd. ABN 63 000 341 819.
101 Waterloo Rd, Macquarie Park NSW 2113.
Phone (02) 9856 5000 Fax (02) 9856 5003

13 14 12

www.fujixerox.com.au

